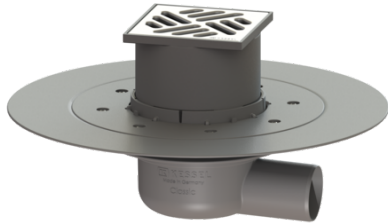


## Classic bathroom drain glued fl. DN 50, horizontal, Slotted grating, K3



### Article information

Item no.: 40150.90  
 GTIN: 4026092028872  
 Price group: 10

### Advantages

- Odour trap height: 50 mm
- Lip seal fixed on the drain body
- System 100 - modular design

### Description

The Classic bathroom drain is suitable for indoor floor drainage. The drain made of ABS is equipped with a telescopic, height-adjustable upper section made of polymer, a removable odour trap as well as a secure, reliably installed seal. Including glued flange and mating flange for clamping PVC sheeting (vapour barriers) or for alternative waterproofing layers (additional honeycomb fabric required).

#### Variant

Waterproofing layer on the upper section:	Adhesive flange (suitable for moisture barriers)
Waterproofing layer on the drain body:	Adhesive flange (suitable for moisture barriers)
Water exposure class in accordance to DIN 18534-1 (up to and including):	W3-I
Sealing water height:	50 mm
Discharge rate (l/s) with 20 mm backwater:	0,8

#### General characteristics

Standard:	EN 1253-1
Nominal size (DN):	50
Outer diameter (OD):	50 mm
ATEX:	no
Odour trap:	included

#### Dimensions

Vertical adjustment:	20 - 60 mm
Net weight:	0,83 kg
Gross weight:	1,07 kg
Cutout dimension, width:	350 mm
Cutout dimension, length:	350 mm
Type of height adjustability:	vertically adjustable upper section
Length:	332 mm

Width:	332 mm
Packaging dimension:	length
Packaging dimension:	width
Packaging dimension:	height
Tank/drain body	
Number of outlets:	1
Material of drain body:	ABS
Socket version:	lateral
Coverage features	
Type of cover:	Slotted cover
Cover material:	Stainless steel 14301
Colour of cover:	silver
Width of cover:	100 mm
Length of cover:	100 mm
Surface:	Polished SST
Frame material:	ABS
Locking:	placed
Load class:	K 3 (EN 1253-1)
Rim width:	107 mm
Rim length:	107 mm
Shape of upper section:	square
Upper section material:	ABS