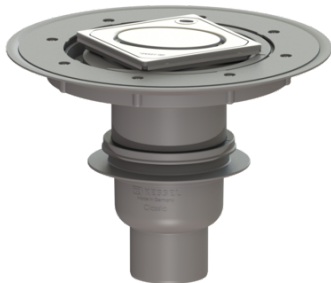


Variofix Classic bathroom drain DN 70, vert., Design grating Oval, L 15



Article information

Item no.: 40270.54
 GTIN: 4026092034002
 Price group: 10

Advantages

- Odour trap height: 50 mm
- Lip seal fixed on the drain body
- Side adjustable cover

Description

The Classic bathroom drain is suitable for indoor floor drainage. The drain made of ABS is equipped with a telescopic, height-adjustable upper section made of polymer, a removable odour trap as well as a secure, reliably installed seal. Including upper section for combined waterproofing for alternative WP layer.

Variant

Waterproofing layer on the upper section:	Enclosed sealing collar to be glued (bd) according to DIN 18534
Water exposure class in accordance to DIN 18534-1 (up to and including):	W3-I
Sealing water height:	50 mm
Discharge rate (l/s) with 20 mm backwater:	0,8

General characteristics

Standard:	EN 1253-1
Nominal size (DN):	70
Outer diameter (OD):	75 mm
ATEX:	no
Odour trap:	included

Dimensions

Vertical adjustment:	45 - 110 mm
Net weight:	1,79 kg
Gross weight:	2,07 kg
Cutout dimension, width:	180 mm
Cutout dimension, length:	220 mm
Type of height adjustability:	vertically adjustable upper section
Length:	312 mm
Width:	312 mm
Packaging dimension:	length

Packaging dimension:	width
Packaging dimension:	height
Tank/drain body	
Number of outlets:	1
Material of drain body:	ABS
Socket version:	vertical
Coverage features	
Type of cover:	Design cover
Cover material:	Stainless steel 14301
Colour of cover:	silver
Width of cover:	120 mm
Length of cover:	120 mm
Frame material:	Stainless steel 14301
Locking:	Lock & Lift
Load class:	L 15 (EN 1253-1)
Grating design:	Oval
Rim width:	132 mm
Rim length:	132 mm
Upper section material:	ABS