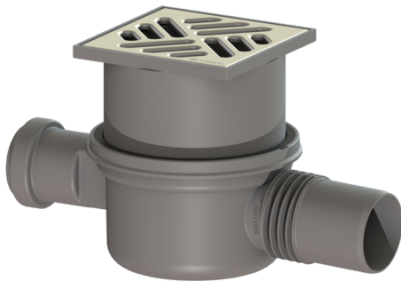


The Superflat bathroom drain DN 50, Slotted grating



Article information

Item no.: 42701.20
 GTIN: 4026092028537
 Price group: 10

Advantages

- Movable outlet socket
- Lip seal fixed on the drain body
- Side inlet via odour trap

Description

The Superflat bathroom drain is suitable for indoor floor drainage. The drain made of PP is equipped with a secure, reliably installed seal as well as a removable odour trap.

Variant

Position of lateral connection:	Type II
Sealing water height:	30 mm
Discharge rate (l/s) with 20 mm backwater:	0,8

General characteristics

Nominal size (DN):	50
Outer diameter (OD):	50 mm
ATEX:	no
Odour trap:	included

Dimensions

Vertical adjustment:	10 - 60 mm
Net weight:	0,41 kg
Gross weight:	0,5 kg
Min. design height:	90 mm
Cutout dimension, width:	180 mm
Cutout dimension, length:	260 mm
Type of height adjustability:	vertically adjustable upper section
Length:	250 mm
Width:	110 mm
Packaging dimension:	length
Packaging dimension:	width
Packaging dimension:	height

Tank/drain body

Number of outlets:	1
--------------------	---

Inlet nominal size (DN):	40 mm
Number of inlets:	1
Material of drain body:	PP
Coverage features	
Type of cover:	Slotted cover
Cover material:	Stainless steel 14301
Colour of cover:	silver
Width of cover:	100 mm
Length of cover:	100 mm
Surface:	Polished SST
Frame material:	PP
Locking:	placed
Load class:	K 3 (EN 1253-1)
Rim width:	107 mm
Rim length:	107 mm
Shape of upper section:	square
Upper section material:	PP