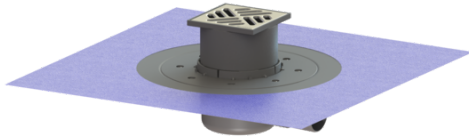


## The Superflat bathroom drain glued flange, DN 50, Slotted grating



### Article information

Item no.: 42701.91  
 GTIN: 4026092029657  
 Price group: 10

### Advantages

- Movable outlet socket
- Lip seal fixed on the drain body
- Side inlet via odour trap

### Description

The Superflat bathroom drain is suitable for indoor floor drainage. The drain made of PP is equipped with a secure, reliably installed seal as well as a removable odour trap.

#### Variant

Sealing water height: 30 mm  
 Discharge rate (l/s) with 20 mm backwater: 0,8

#### General characteristics

Nominal size (DN): 50  
 Outer diameter (OD): 50 mm  
 ATEX: no  
 Odour trap: included

#### Dimensions

Vertical adjustment: 19 - 27 mm  
 Net weight: 0,99 kg  
 Gross weight: 1,21 kg  
 Cutout dimension, width: 350 mm  
 Cutout dimension, length: 350 mm  
 Type of height adjustability: vertically adjustable upper section  
 Length: 332 mm  
 Width: 332 mm  
 Packaging dimension: length  
 Packaging dimension: width  
 Packaging dimension: height

#### Tank/drain body

Number of outlets: 1  
 Inlet nominal size (DN): 40 mm  
 Number of inlets: 1

Material of drain body:	PP
Coverage features	
Type of cover:	Slotted cover
Cover material:	Stainless steel 14301
Colour of cover:	silver
Width of cover:	100 mm
Length of cover:	100 mm
Frame material:	PP
Locking:	placed
Load class:	K 3 (EN 1253-1)
Rim width:	107 mm
Rim length:	107 mm
Upper section material:	PP