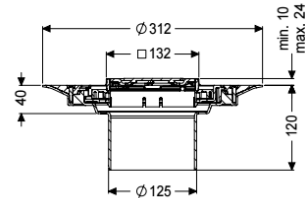
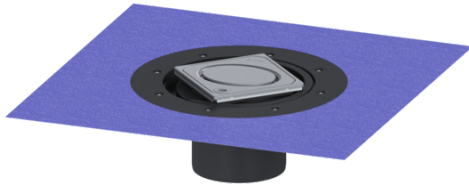


## Variofix upper section Designrost Oval, V4A, Lock & Lift, L 15



### Article information

Item no.: 48669  
 GTIN: 4026092077986  
 Price group: 10

### Advantages

- Different covers selectable
- Including waterproofing membrane

### Description

Used in combination with a drain body of the KESSEL modular system, the upper section is suitable for indoor point drainage.

Variant

|  |   |
|--|---|
| System:  | 125   |
| Waterproofing layer on the upper section:                                | Enclosed sealing collar to be glued (bd) according to DIN 18534 |
| Water exposure class in accordance to DIN 18534-1 (up to and including): | W3-I  |

General characteristics

|       |    |
|-------|----|
| ATEX: | no |
|-------|----|

Dimensions

|                               |                                     |
|-------------------------------|-------------------------------------|
| Vertical adjustment:          | 10 - 23 mm                          |
| Net weight:                   | 1,82 kg                             |
| Gross weight:                 | 1,82 kg                             |
| Diameter:                     | 312 mm                              |
| Type of height adjustability: | vertically adjustable upper section |
| Height:                       | 120 mm                              |
| Packaging dimension:          | length                              |
| Packaging dimension:          | width                               |
| Packaging dimension:          | height                              |

Coverage features

|                         |                                |
|-------------------------|--------------------------------|
| Type of cover:          | Design cover                   |
| Cover material:         | 316 stainless steel            |
| Colour of cover:        | silver                         |
| Frame material:         | 316 stainless steel            |
| Locking:                | Lock & Lift                    |
| Load class:             | L 15 (EN 1253-1)               |
| Grating design:         | Oval                           |
| Rim width:              | 132 mm                         |
| Rim length:             | 132 mm                         |
| Upper section:          | adjustable in three dimensions |
| Shape of upper section: | square                         |
| Upper section material: | ABS                            |