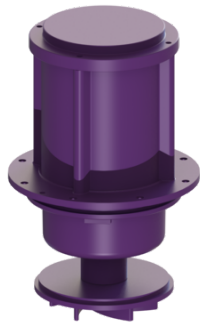


Pump drive SPF 5500 E 400 V, S3, 5 m cable



Article information

Item no.: 680727
GTIN: 4026092095508
Price group: 90

Description

Pump drive with multi-vane impeller for faecal wastewater

General characteristics

ATEX: no

Dimensions

Net weight: 38 kg
Gross weight: 40 kg
Packaging dimension: length
Packaging dimension: width
Packaging dimension: height

Pumping device

Pump: SPF 5500 E
Connection type: Direct connection
Rated current: 9,1 A
Length of mains cable for pump: 5 m
Protection class: I
Protection class (pump): IP 68 (3m/48h)
Max. temperature (permanent) of conveyed material: 40 °C
Max. pumping height: 27 m
Speed: 2840 U/min
Power P1: 5,6 kW
Power P2: 4,7 kW
Type of pump connection cable: H07RN-F 7G 1.5 mm²

Control

Mains frequency: 50 Hz
Operating voltage: 400 V
Connection type: Direct connection
Rated current: 9,1 A