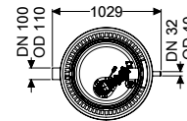
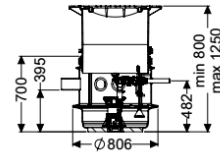
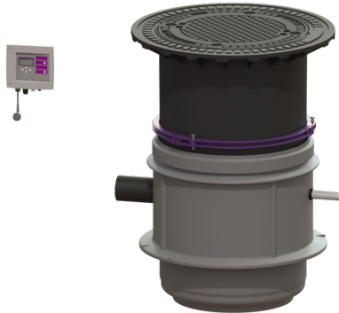


## Pumping station Aquapump Medium Tronic, GTF 600, 800-1200 mm, B



### Article information

Item no.: 825811B  
 GTIN: 4026092045237  
 Price group: 60

### Advantages

- Maximum safety
- LW 600 chamber system suitable for underground installation
- Preconfigured in the factory

### Description

The pumping station without sewage wastewater is equipped with one or two submersible pumps and a backflow preventer. The collection tank is an LW 600 chamber system made of permanently resistant polymer (PE-LLD) with open pump tank and universal connection options. Quick-release closures enable the integrated components to be removed easily.

#### Variant

|   |                  |
|---|------------------|
| Type of system:                         | Single unit      |
| Passage seal for conduit pipe (DN):     | 100              |
| Passage seal for ventilation pipe (DN): | 100              |
| Installation:                           | Wet installation |
| Pump control:                           | Control unit     |
| Backflow preventer:                     | integrated       |
| Pressure pipe connection:               | horizontal       |
| Chamber system:                         | LW 600           |

#### General characteristics

|                         |                                  |
|-------------------------|----------------------------------|
| Colour:                 | black                            |
| Standard:               | EN 12050-2                       |
| Type of wastewater:     | without sewage                   |
| Installation situation: | underground installation         |
| Delivery state:         | Modular set for assembly on site |

|  |                                     |
|--|-------------------------------------|
| System type:   | Tronic                              |
| Dimensions   |                                     |
| Net weight:  | 111 kg                              |
| Gross weight:  | 118 kg                              |
| Groundwater resistant from lower edge of base section: | 2000 mm                             |
| Installation depth:                                    | 800 - 1250 mm                       |
| Type of height adjustability:                          | vertically adjustable upper section |
| Length:  | 810 mm                              |
| Width:   | 810 mm                              |
| Packaging dimension:                                   | length                              |
| Packaging dimension:                                   | width                               |
| Packaging dimension:                                   | height                              |
| Tank/drain body  |                                     |
| Pressure pipe connection (DN):                         | 32                                  |
| Pressure pipe connection (OD):                         | 40 mm                               |
| Connection conduit pipe (DN):                          | 100                                 |
| Venting connection (DN):                               | 100                                 |
| Distance from centre of outlet pipe to tank bottom:    | 482 mm                              |
| Distance pipe bottom inlet to tank bottom:             | 400 mm                              |
| Distance from centre of inlet pipe to tank bottom:     | 455 mm                              |
| Inlet nominal size (OD):                               | 110 mm                              |
| Inlet nominal size (DN):                               | 100 mm                              |
| Number of inlets:                                      | 1                                   |
| Clear width of tank (LW):                              | 600 mm                              |
| Clear width of entry (LW):                             | 600 mm                              |
| Coverage features                                      |                                     |
| Type of cover:   | Round cover plate                   |
| Cover material:  | Grey iron                           |
| Colour of cover:                                       | black                               |
| Width of cover:  | 648 mm                              |
| Height of cover:                                       | 103 mm                              |
| Length of cover:                                       | 648 mm                              |
| Locking:   | unlocked                            |
| Load class:  | B 125 (EN 124)                      |
| Pumping device   |                                     |
| Pump:  | GTF 600                             |
| Number of pumps:                                       | 1                                   |
| Weight, pump:  | 6 kg                                |
| Connection type:                                       | coded plug                          |
| Rated current:   | 2,7 A                               |
| Length of mains cable for pump:                        | 10 m                                |
| Protection class:                                      | I                                   |
| Insulation class:                                      | F                                   |

|  |                                |
|--|--------------------------------|
| Cos phi - power factor:                            | 0,91                           |
| Protection class (pump):                           | IP 68 (3m)                     |
| Temperature monitoring:                            | integrated                     |
| Max. temperature (permanent) of conveyed material: | 40 °C                          |
| Max. pumping capacity:                             | 12 m <sup>3</sup> /h           |
| Max. pumping height:                               | 8 m                            |
| Speed:   | 2800 U/min                     |
| Power P1:  | 0,6 kW                         |
| Power P2:  | 0,36 kW                        |
| Operating mode:                                    | S1                             |
| Type of pump connection cable:                     | H07RN-F 3G 1.5 mm <sup>2</sup> |
| Impeller type:                                     | Multi-vane impeller            |

#### Control

|   |                             |
|---|-----------------------------|
| Control unit:                           | Comfort                     |
| Alarm sensor:                           | optical probe               |
| Level measurement instrument:           | Submersible pressure switch |
| Type of level measurement:              | pneumatic                   |
| Protection class control unit:          | IP 54                       |
| Mains frequency:                        | 50 Hz                       |
| Operating voltage:                      | 230 V                       |
| Connection type:                        | coded plug                  |
| Length of mains cable for control unit: | 1,4 m                       |
| Potential-free contact:                 | optional                    |
| GSM interface:                          | yes                         |
| USB interface:                          | yes                         |
| Log book function:                      | yes                         |
| Multi-line display:                     | yes                         |
| Battery buffering:                      | yes                         |
| Self-diagnosis system (SDS):            | yes                         |
| Rated current:                          | 2,7 A                       |