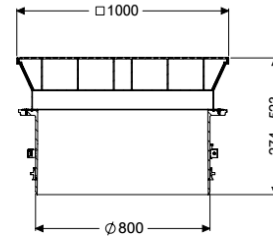
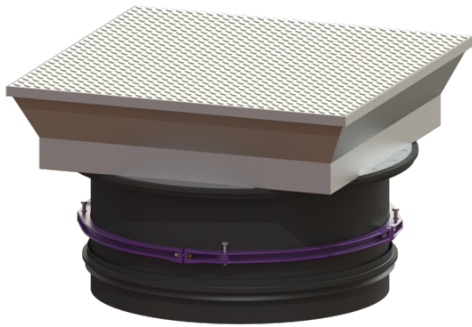


## Upper section Square cover plate, LW 800, Class D



### Article information

Item no.: 8740180  
 GTIN: 4026092070468  
 Price group: 60

### Description

Upper section for continuous height and level compensation for chamber module LW 1000, consisting of a drive-over, flush-to-ground cover for setting in concrete, with inner joints, all-round frost- and weather-proof seal, gas spring as an opening aid incl. self-effective arresting device. An all-round concrete ring must be prepared on site. Suitable for taper with 800 mm access.

#### General characteristics

Colour: black  
 Material: Polymer

#### Dimensions

Net weight: 152,37 kg  
 Gross weight: 170,1 kg  
 Clear width (LW): 800 mm  
 Adjustment range: 274 - 523  
 Packaging dimension: length  
 Packaging dimension: width  
 Packaging dimension: height

#### Coverage features

Type: surface water resistant  
 Surface: Stainless steel  
 Locking: screwed  
 Load class: D 400 (EN 124)